

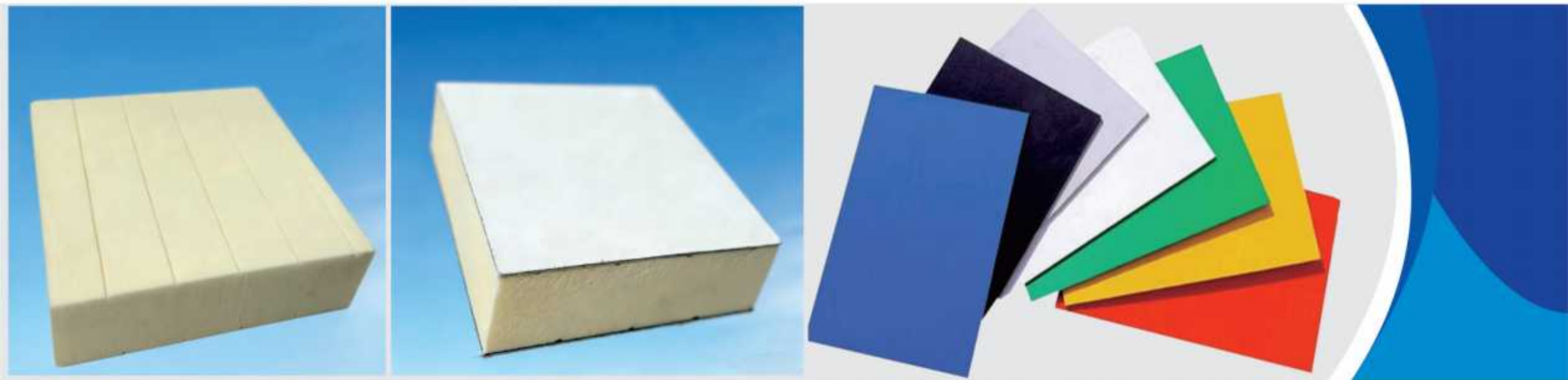


青岛凯菲尔智能冷藏车有限公司

Qingdao Kaifeier Intelligent Refrigerated Truck Co., Ltd.

新材料-夹芯板/玻璃钢/聚氨酯

New Materials: Sandwich Panels / FRP / Polyurethane



青岛凯菲尔位于青岛平度市经济开发区，拥有10.6万平方米生产基地，有两个生产基地，三个事业部。是专业研发、生产、销售玻璃钢聚氨酯夹心板的高新技术企业。

公司主营玻璃钢聚氨酯夹心板，产品采用玻璃钢面层成型+聚氨酯高压发泡复合一体化工艺，具备保温隔热、强度高、耐腐蚀、轻量化、环保耐用等优异性能，广泛应用于专用车、冷链物流、移动方舱等领域。公司深耕环保板材领域十年，打造自动化生产线，配备国际先进亨内基发泡机与自研发泡枪头，采用环戊烷环保体系，产品绿色无害，契合国家“双碳”战略。公司与万华化学长期战略合作，原料优质、配方稳定，依托高校产学研合作，拥有39项专利、36项科技成果转化，是国内专用车行业唯一各项指标均优于国标的聚氨酯板材生产企业。

公司凭借核心技术与卓越品质，掌握行业领先的注入发泡工艺，已通过ISO9001、3C认证。凭借高端品质与良好口碑，与一汽解放、北汽福田、牧原股份等知名企业长期合作，持续引领专用车环保玻璃钢聚氨酯夹心板行业高质量发展。

Qingdao Kaifeier is located in Pingdu Economic Development Zone, Qingdao. With two production bases, three business divisions, and a total area of 106,000 sqm, we are a high-tech enterprise dedicated to the R&D, production, and sales of FRP Polyurethane Sandwich Panels.

Our core panels are produced via an integrated process of FRP face sheet forming and high-pressure polyurethane foaming. Featuring excellent thermal insulation, structural strength, corrosion resistance, lightweight design, and environmental durability, our products are widely applied in special vehicles, cold chain logistics, mobile shelters, and other fields.

Equipped with internationally advanced Hennecke foaming machines and self-developed foaming guns, we adopt a cyclopentane-based green production system that fully aligns with China's "Double Carbon" strategy. Through partnerships with Wanhua Chemical and industry-university-research collaboration, we hold 39 patents and 36 technological achievements, making us the only manufacturer in China's special vehicle industry whose products exceed national standards.

Certified with ISO9001 and 3C, we serve top clients including FAW Jiefang, Foton Motor, and Muyuan Foods. We are committed to leading the high-quality development of the eco-friendly FRP polyurethane sandwich panel industry.

产品展示

玻璃钢 (FRP) FRP Sandwich Panel



应用领域 | Application Fields

冷藏车Refrigerated Truck
 保温车厢Insulated Van Body
 房车RV (Recreational Vehicle)
 方舱Mobile Cabin
 冷库Cold Storage
 保鲜库Fresh-Keeping Warehouse
 洁净车间Clean Workshop
 防腐保温墙体Anti-Corrosion & Thermal Insulation Wall

玻璃钢参数表 | FRP Parameter Table

No.	thickness(mm)	weight (kg/m ²)
1	3	4.5
2	5	7.5
3	8	12.0

No.	listings	data
1	Static strength	220 MPa
2	Elastic modulus	21000MPa
3	Barcol hardness	45-50
4	Lateral compressive strength	≥ 140 MPa
5	Flat compressive strength	170 MPa
6	Tensile strength	190MPa


 多功能作业方舱
Multi-functional Operational Shelter Truck


房车RV



方舱Mobile shelter

产品展示

聚氨酯
Polyurethane (PU) Sandwich Panel



管件管路 piping and pipe fittings

应用领域 Application Fields

- 餐车 Food Trucks
- 冷藏车 Refrigerated Truck
- 厢式货车的厢体 Van Body of Box Truck
- 冷链厢体 Cold Chain Van Body
- 房车 RV (Recreational Vehicle)
- 洁净车间 Clean Workshop
- 净化房 Purification Room
- 移动方舱 Mobile Cabin
- 模块化房屋 Modular House
- 工业厂房围护 Industrial Plant Enclosure
- 隔断 Partition Wall

聚氨酯参数表 (PU) Parameter Table

No.	thickness(mm)	weight (kg/m ²)
1	15	4.0
2	18	6.0
3	21	10.0

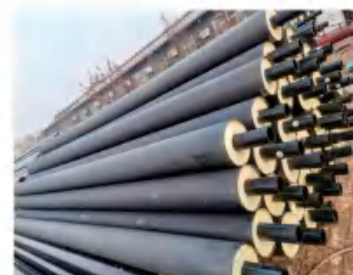
No.	listings	data
1	Static strength	25 MPa
2	Elastic modulus	1500MPa
3	Barcol hardness	80-95
4	Lateral compressive strength	≥ 15 MPa
5	Flat compressive strength	20 MPa
6	Tensile strength	20 MPa



冷藏车 Refrigerated Truck

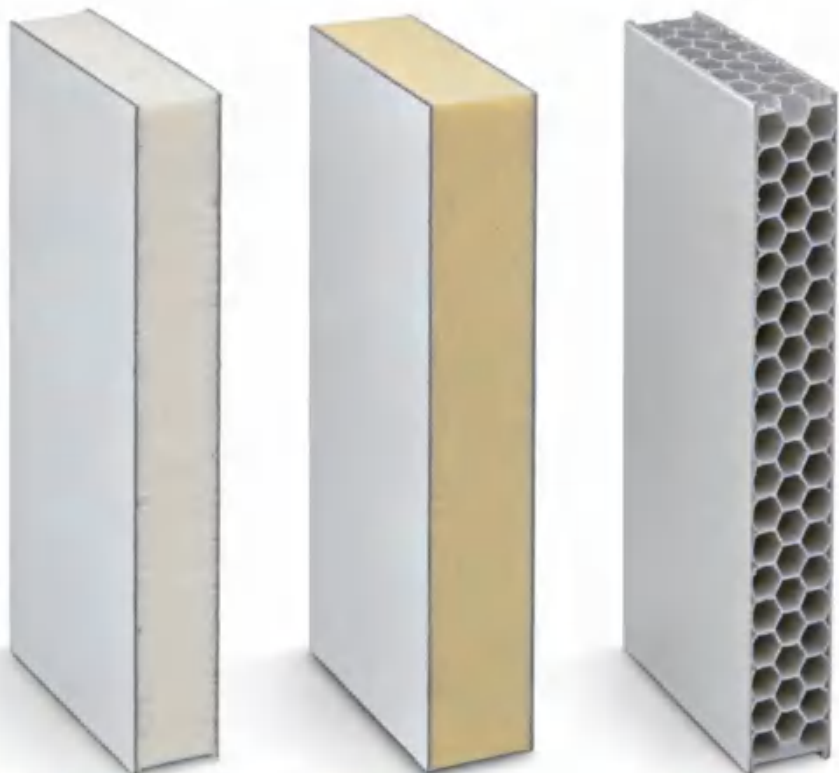


移动方舱车 - Mobile Shelter Truck



聚氨酯保温管壳
PU Insulation Pipe Shells

夹芯板 sandwich panel



复合夹芯板-玻璃钢+聚氨酯夹芯板
-FRP + PU Sandwich Panel

复合夹芯板-玻璃钢+挤塑板
-FRP + XPS Sandwich

夹芯板玻璃钢+蜂窝板
-FRP + Honeycomb Sandwich Panel

餐车 Food Trucks

洁净室 Clean Rooms

工业厂房 Industrial Workshops

冷藏车 Refrigerated Truck

冷链车厢箱体: Cold Chain Van Body

房车: RV (Recreational Vehicle)

特种车辆外壳/厢体: Special Vehicle Shell & Body

冷库: Cold Storage

工业保温工程: Industrial Thermal Insulation Engineering



房车内饰- RV Interior



冷链厢体 Cold Chain Van Bodies



餐车 Food Trucks

产品展示

Product Solutions



顶板 (Roof Panel)

玻璃钢、玻纤板、铝/PU骨架、XPS、内饰板，厚度30 - 60mm，可定制。
 FRP, fiberglass board, aluminum/PU framework, XPS, interior panel. 30 - 60mm, customization.

墙板 (Wall Panel)

高光玻璃钢、玻纤板、铝/PU骨架、XPS、内饰板，厚度25 - 50mm，可定制。
 High-gloss FRP, fiberglass board, aluminum/PU framework, XPS, interior panel. 25 - 50mm, customization.

地板 (Floor Panel)

防滑玻璃钢、木纹PVC、胶合板、铝/钢骨架、XPS。厚度35 - 52mm，可定制。
 Anti-slip FRP, wood-grain PVC, plywood, aluminum/steel framework, XPS. 35 - 52mm, customizable.

特点 | Key Features

隔热优良，厚度均匀，表面平整，抗紫外线强，地板防滑，均可定制。
 Excellent insulation, uniform thickness smooth surfaces, strong UV resistance, anti-slip flooring, all customization.



顶板 (Roof Panel)

冷藏车：PU或XPS复合板，厚度60 - 130mm，保温优越。
 Refrigerated: PU or XPS composite. 60 - 130mm, excellent insulation.
 干货车：XPS复合板，厚度15 - 35mm，强度较好。
 Dry Cargo: XPS composite. 15 - 35mm, good strength.

墙板 (Wall Panel)

冷藏车：材料同顶板，厚度60 - 120mm。
 Refrigerated: Same as roof. 60 - 120mm.
 干货车：玻璃钢或蜂窝复合板，厚度15 - 35mm，轻便耐用。
 Dry Cargo: FRP or honeycomb composite. 15 - 35mm, lightweight, durable.

地板 (Floor Panel)

冷藏车：防滑玻璃钢、PU或XPS芯材，厚度60 - 120mm。
 Refrigerated: Anti-slip FRP, PU or XPS core. 60 - 120mm.
 干货车：防滑玻璃钢，厚度15 - 35mm，防滑耐用。
 Dry Cargo: Anti-slip FRP. 15 - 35mm, anti-slip, durable.

产品特点 | Key Features

高强玻璃钢制成，轻量、耐用、防腐、易修复。
 Made from high-strength FRP, lightweight, durable, corrosion-resistant, easy to repair.

车间场景
Workshop View



全球战略 Global Strategy



青岛凯菲尔智能冷藏车有限公司

Qingdao Kaifeier Intelligent Refrigerated Truck Co., Ltd.

Qingdao Kaifeier Intelligent Refrigerated Truck Co., Ltd.

Address: No. 9 Jingsi Road, Pingdu Economic Development Zone, Qingdao, Shandong Province, China

Postal Code: 266700

Tel: +86 185 6265 0615

Website: www.kfepanels.com

地址:山东省青岛平度市经济开发区经四路9号

邮编:266700

电话:185 6265 0615

网址:www.kfepanels.com



微信扫一扫,了解更多



WhatsApp